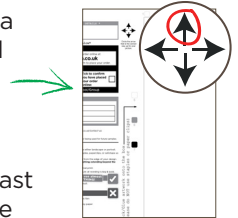


ARTWORK GUIDELINES



- Artwork must be completed on A4 or A5 sized paper or card. The artwork can be either landscape or portrait.
- Please attach artwork to the pupil order form provided with a glue stick. Don't use staples, paperclips, or sellotape as it will spoil the look of the artwork!
- Circle the arrow on the pupil order form to let us know the orientation of your design.
- Keep important details such as text and border designs at least 1cm away from the edge of the design. A small amount of the design is trimmed during production and we don't want you to lose important details.
- Everything on your design will be printed including hand drawn borders
- Anything extending beyond the A4/A5 sheet of paper will not appear on the finished card at all.
- Keep designs unfolded and damage free as creases and marks will show on the final print.



After trimming

Good Results

You can use almost ANYTHING!

- ✓ To complete the design pupils may use a wide range of materials including collage.
- ✓ Bold and bright designs that fill the paper produce the best effect. Large areas of white background are less effective.

Do Not Use

- × Same coloured media on the same coloured background
- × Photos printed on glossy paper
- × Transparent film covering your artwork
- × Light Pencil and colour pencil
- × Pencil onto colour paper

